

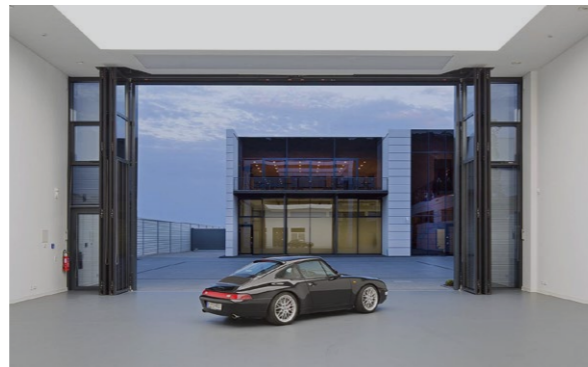
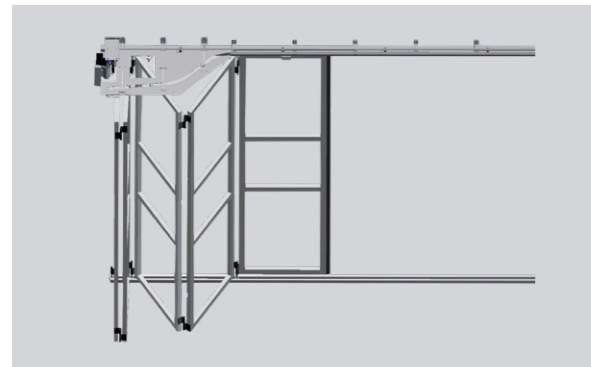


SLIDING FOLDING DOORS

The folding door with special guides

Sliding folding doors offer a great alternative to folding doors when it comes to large openings and corresponding wind loads.

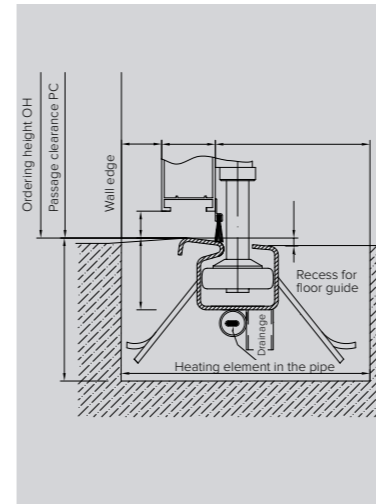
SCHNEIDER is capable of producing various designs to meet the tough requirements in industrial applications. At the same time, all design options of a folding door are available. Sliding folding doors open to the full width of the opening.



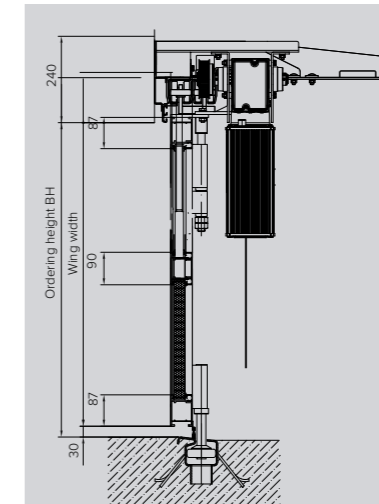
Technical data	AL602SF	AL603SF	ST602SF
Frame	Aluminium	Aluminium, thermally separated	Steel
Installation depth	min. 60 mm	min. 60 mm	min. 60 mm
Profile width	min. 87 mm	min. 87 mm	min. 95 mm
Max. door size (ordered width x ordered height)	15,600 x 5,600 mm	15,600 x 5,600 mm	15,600 x 7,000 mm
Max. wing width	1,300 mm	1,300 mm	1,300 mm
Split versions	2+0 / 2+2 / 2+4 / 2+6 / 4+0 / 4+2 / 4+4 / 4+6 / 6+0 / 6+2 / 6+4 / 6+6 / 8+0	2+0 / 2+2 / 2+4 / 2+6 / 4+0 / 4+2 / 4+4 / 4+6 / 6+0 / 6+2 / 6+4 / 6+6 / 8+0	2+0 / 2+2 / 2+4 / 2+6 / 4+0 / 4+2 / 4+4 / 4+6 / 6+0 / 6+2 / 6+4 / 6+6 / 8+0
Installed pedestrian door	Max. height 2,500 mm	Max. height 2,500 mm	Max. height 2,500 mm
Continuous glazing	Ordered height 4000 mm	Ordered height 4000 mm	Ordered height 4500 mm
Sliding and folding door drive with controls TS971	Self-retaining mechanism	Self-retaining mechanism	Self-retaining mechanism
Heat resistance	on request	on request	on request
Fire protection	Class 0	Class 0	Class 0
Motion cycles	200,000	200,000	200,000

TECHNICAL DETAILS: SLIDING AND FOLDING DOORS

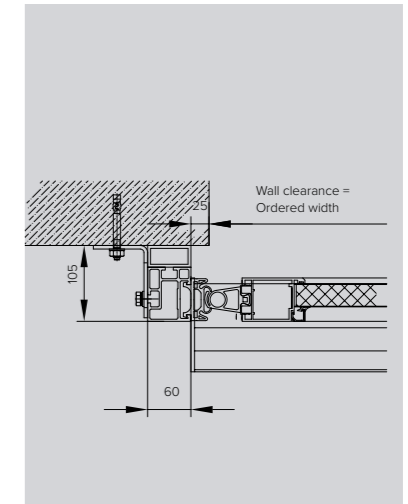
Floor connection



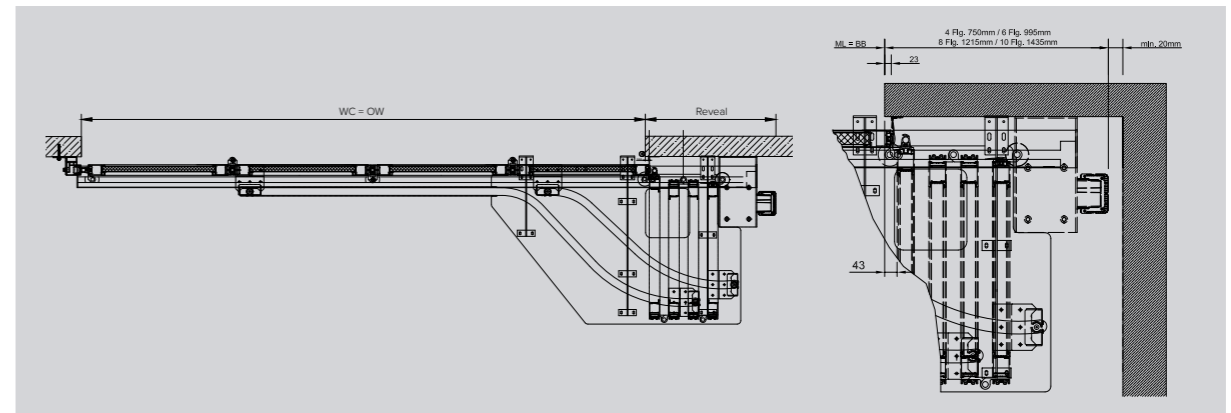
Vertical section



Wall mounting



Horizontal section



POWER-SF SLIDING/FOLDING DOOR DRIVE

	Suitable for	AL602SF, AL603SF, ST602SF
	Supply voltage	400 V
	Max. power rating	0.85 kW
	Opening speed	approx. 30 cm/sec.
	Wing width	max. 1,300 mm
	Wing height	max. 5,600 mm (aluminium doors) max. 7,000 mm (steel doors)
	Split versions	2+0 / 2+2 / 2+4 / 2+6 / 4+0 / 4+2 / 4+4 / 4+6 / 6+0 / 6+2 / 6+4 / 6+6 / 8+0
	Type of protection	IP65
	Controls	Self-retaining mechanism, two-way traffic

- > Motor/gearbox unit in sturdy drive housing made from cast alloy
- > Sliding/folding door operates smoothly and quietly
- > Self-locking gearbox unit
- > Suitable for high frequency of use
- > Car approach switchable, with individual time setting
- > Drive disengagement in the event of a power failure with a cable pull from the ground
- > Digital limit switch for distance limitation
- > Self-retaining mechanism: OPEN – STOP – CLOSE button, closing edge safety device, flashing light
- > two-way traffic: OPEN – STOP – CLOSE button, closing edge safety device, single (red light) or two-way traffic control (red/green light)